



North Yorkshire Council Localities Community Team Update

Community Partnerships

**Update: Southern Area Parish Forum
9th October 2024**

**Paddy Chandler
Community Localities Lead, East. North Yorkshire Council**

Localities Service Priorities

1. Communities Team:

1. Current and future offer for communities. Designing and embedding across the Council a comprehensive 'deal' for Voluntary, Community and Social Enterprise (VCSE) sector including review of existing funding arrangements.
2. Community Partnerships implementation.
3. Community Anchor Development
4. Developing and delivering programmes of work to support the digital inclusion and cost of living/financial inclusion agendas.

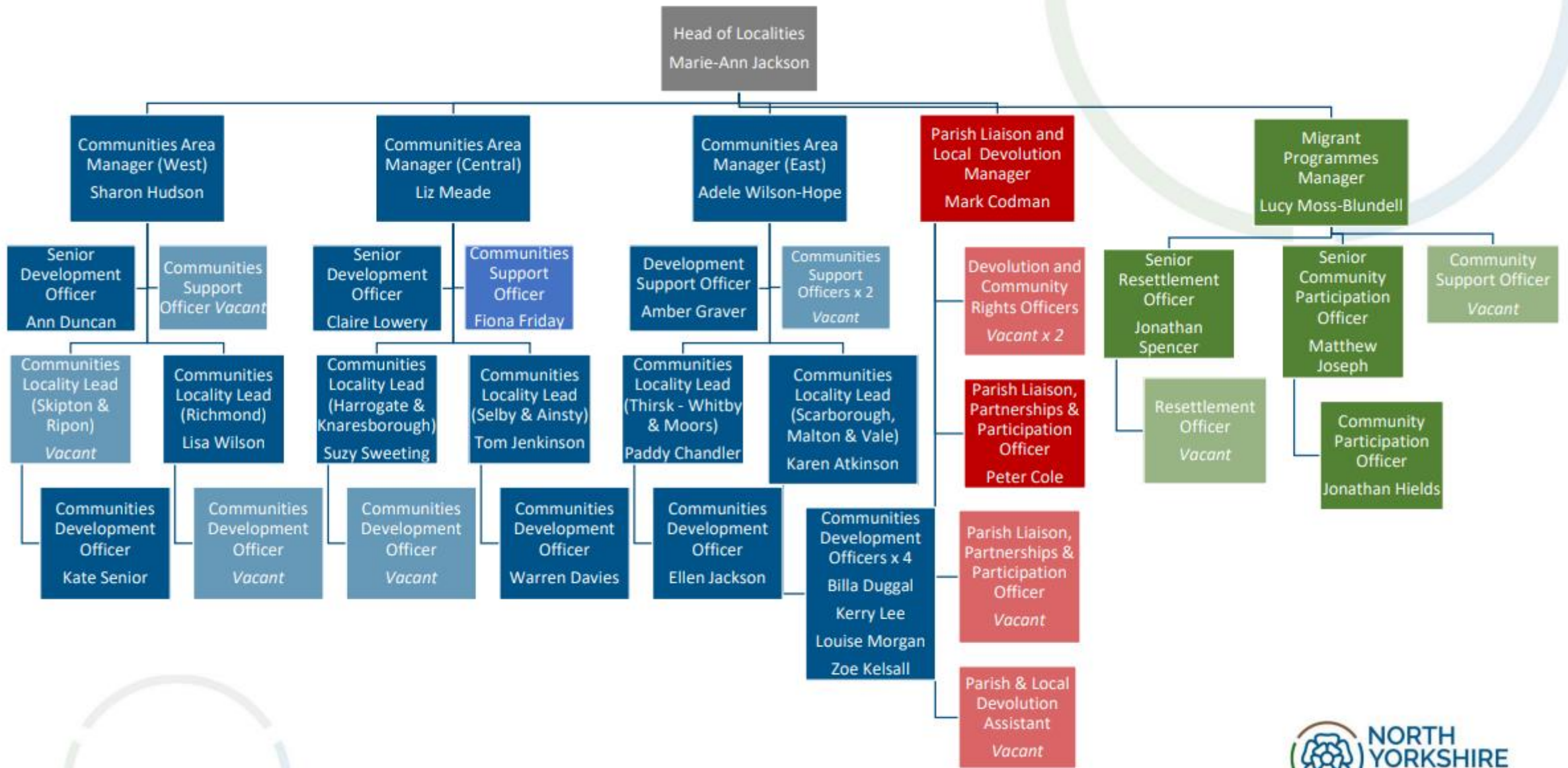
2. Parish Liaison Team

1. Review of Parish Charter and Parish Liaison arrangements.
2. Support the devolution of council assets and services to town and parish councils and community groups.

3. Migrant Programmes Team

1. Delivering programmes of work to support asylum seekers and refugees.





Community Partnerships – Context & Vision

Community Partnerships are a key part of the North Yorkshire Council Bid to ensure that local priorities and challenges are addressed as effectively as possible, with the aim is for circa 30 Community Partnerships around market towns and hinterland.

The role of Community Partnerships is to:

- Mobilise communities, unleash energy and ambition & give them a stronger voice
- Be action oriented, creating the conditions for local action to take place that otherwise wouldn't happen
- Develop local priorities and action plans utilising the skills, knowledge and assets of a range of partners
- Provide a mechanism for external investment

In carrying out that role, Community Partnerships will:

- Have a strong focus on prevention and reducing inequalities
- Be encouraged to look long term to tackle local challenges that:
 - improve the local economy and contribute to the creation of community wealth
 - drive community action
 - improve community, environmental and individual wellbeing
 - improve community resilience



Community Partnerships – Are not:

Community Partnerships will not:

- Be single agencies nor will they have a single focus.
- Be talking shops. Their focus will be on delivering positive change through enabling the delivery of local projects.
- All happen at the same time. Developing partnerships and working collaboratively takes time and it is therefore likely that some will take longer to develop than others.
- Have devolved budgets. They will however be encouraged and supported to explore funding opportunities from a range of sources such as UK Shared Prosperity Funding, Community Infrastructure Levies, national and local trusts and foundations and investment from corporate social responsibility opportunities.
- Be part of the formal governance structure of North Yorkshire Council.
- Have any devolved powers to set public policy or fetter the discretion of any of the individual partner organisations.

Community Partnerships - Stakeholders

- **Informal partnerships** between officers and Members of the new Council with colleagues from public, business, faith, voluntary and community sectors where each organisation commits to work together towards a set of shared goals.
- **North Yorkshire Councillors** - Will take a leading role in shaping the arrangements for their divisions and representing the council.
- **Area Constituency Committees:** Supporting the partnerships to deliver their action plans and would provide a forum for local issues of importance to be raised.
- **Community Teams:** All partnership members, including Councillors, partner agencies, community members and service teams will be able to draw support from a team of community officers, employed by the Council within the Local Engagement service. This could include support with training, accessing data and local intelligence, running participatory workshops and accessing external funding.

Community Partnerships: Pilots

It is likely that the networks will look different in different places as they will reflect their local community however it is proposed that they will share some common principles in relation to their membership and mode of operation.

Five pilots have been chosen to provide learning and insight:

- Easingwold
- Leyburn and Middleham
- Ripon
- Sherburn in Elmet
- Forest and Dale

Forest and Dale Community Partnership Pilot

Forest and Dale Area: Built on a Parish Council grouping in this area. Now includes the parishes of; Levisham, Lockton, Thornton Le Dale, Allerston and Wilton, Ebberston Yedingham Bickley, Snainton, Brompton by Sawdon, Derwent Valley and Moor.

The area includes North Yorkshire Councillor divisions of Councillor Janet Sanderson; Thornton Dale and Wolds and Councillor David Jeffels; Derwent Valley and Moor

First meeting: November 2023: Twice yearly Community Partnership meetings – action focused subgroups focusing on locally prioritised issues.

Adopted the North Yorkshire and York Rural Commission report 2021 Rural Commission Executive Summary (northyorks.gov.uk) and seven themes as the partnership's strategic framework. (*Rural economy, energy transition, digital connectivity, farming and land management, rural housing, rural schools, education and training, and rural transport*)

[Rural Commission Report FINAL-compressed.pdf \(northyorks.gov.uk\)](#)

Working Groups: Initially identified: **Flood prevention, Parish Council Sustainability**, Housing, and Digital Connectivity

Small grant funding to provide some admin support is in place.



Forest and Dale Community Partnership Working Group One – Flood Prevention

- Community-led: Focus and themes prioritisation
- Drawn on expertise inc. Highways, Env. Agency, Internal Drainage Board, and vitally residents.
- Mapping and understanding local issues (assets collection)
- Site visits
- Group Successfully harnessed feasibility funding: £20,000 UK Shared Prosperity Funding
- EOI opportunities for community organisations currently live; to explore action and ideas with wider learning. Contact if interested. For example:

Forest and Dale Community Partnership Working Group Two – Rural Parish Council Sustainability

- Recruitment and retention of Councillors
- Training, development and support for Parish Councillors
- Training, development and support for clerks
- Exploring new boundaries and merging opportunities
- Engaging and sharing specialist skills input – EG HR, IT
- Vexatious and abusive behaviour management
- Changing and developing relationship with the new authority NYC.
- Engaging expertise: Local democracy Team – Jenifer Norton, Daniel Harry have attended sessions.
- Next Steps – Meeting YLCA and NYC Parish Liaison

Community Partnerships – Next Steps

- Community Partnerships Pilots went to NYC Executive on 17.09.24 [Report - Localities Programme.pdf \(northyorks.gov.uk\)](#) – agreed to develop the model.
- Forest and Dale –
 - Review progress of the partnership; Area, membership, aims.
 - Build on the working group successes and learning
 - Opportunities to get involved in groups or partnership
 - The current opportunity for flood prevention funding – an exciting chapter
 - Continue to improve the alignment with stakeholders in the community from village halls, to GPs to the National Park Authority
 - Evaluate, learn, and tackle the next priorities.

Thank you – Any questions

Paddy Chandler

Community Locality Lead, East, North Yorkshire Council.

Paddy.chandler@northyorks.gov.uk

