

# Farming in Protected Landscapes

Working in partnership with farmers and land managers to look after our landscapes together

CASE STUDIES YEAR 2



North York Moors  
National Park



**LOCAL KNOWLEDGE  
AND CONTACTS WERE  
ABSOLUTELY VITAL  
IN THIS PROCESS AND  
MUCH APPRECIATED.”**

Funding from the Department for Environment, Food and Rural Affairs (Defra) is available for projects in the North York Moors National Park through the Farming in Protected Landscapes (FiPL) programme.

Farming in Protected Landscapes has been rolled out across all the National Parks and Areas of Outstanding Natural Beauty in England and is open to applicants until March 2025. Decisions are made locally and the team at the North York Moors National Park Authority are here to help you through the process.

The programme is open to farmers and land managers within the North York Moors National Park. Farmers and land managers with land outside this boundary are eligible if it is clear the project will benefit the National Park, or it addresses the key priorities of the North York Moors National Park Management Plan.

Applicants must manage all the land included in the application and have control of all the activities they would like to undertake or have written consent from all parties who have this management and control. Applications on common land are also eligible.

Other organisations and individuals can apply if it is in collaboration with a farmer or land manager or supports a farmer or group of farmers.

The Farming in Protected Landscapes programme can help farmers and land managers prepare themselves to take advantage of the new Environmental Land Management schemes.

Projects will be eligible if they reflect at least one of the four Farming in Protected Landscapes themes:



Support **NATURE** recovery



Mitigate the impacts of **CLIMATE CHANGE**



Provide opportunities for **PEOPLE** to discover, enjoy and understand the landscape and its cultural heritage



Protect or improve the quality and character of the **PLACE**

Projects will also need to help deliver key priorities outlined in the North York Moors National Park Management Plan.

To apply for a Farming in Protected Landscapes grant or for more details on the programme, please contact:

**Dave Arnott**

Farming in Protected Landscapes Officer on **01439 772 589** or by email **d.arnott@northyorkmoors.org.uk**

**Robert Black**

Assistant Project Officer on **01439 772 533** or by email **r.black@northyorkmoors.org.uk**

**Rebecca Thompson**

Head of Farming and Landscape Management on **01439 772 517** or email **r.thompson@northyorkmoors.org.uk**

Further information is available on our website:

**northyorkmoors.org.uk/farminginprotectedlandscapes**

# Achievements in the 2022/23 financial year

Number of projects by outcome type



59

Nature

59

Climate

33

People

60

Place

**4,621**

trees planted resulting in 9.96 ha new woodland



**24**

projects improving soil conditions



**14**

ponds created / restored



**4,577**

meters (2.8 miles) of riverside fencing



hectares of existing habitat improved

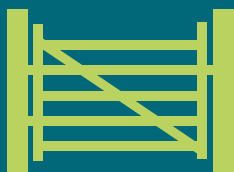


**167**

volunteers involved



farmers who have previously not engaged in agri-environment schemes secured funding



**66**

gates installed along PROWs



**103**

projects approved



**£788,853**

allocated to projects

# CASE STUDIES

Awarded  
**£101,049**

## Better Estuary and Coastal Habitats (BEACH Esk)

Yorkshire Wildlife Trust

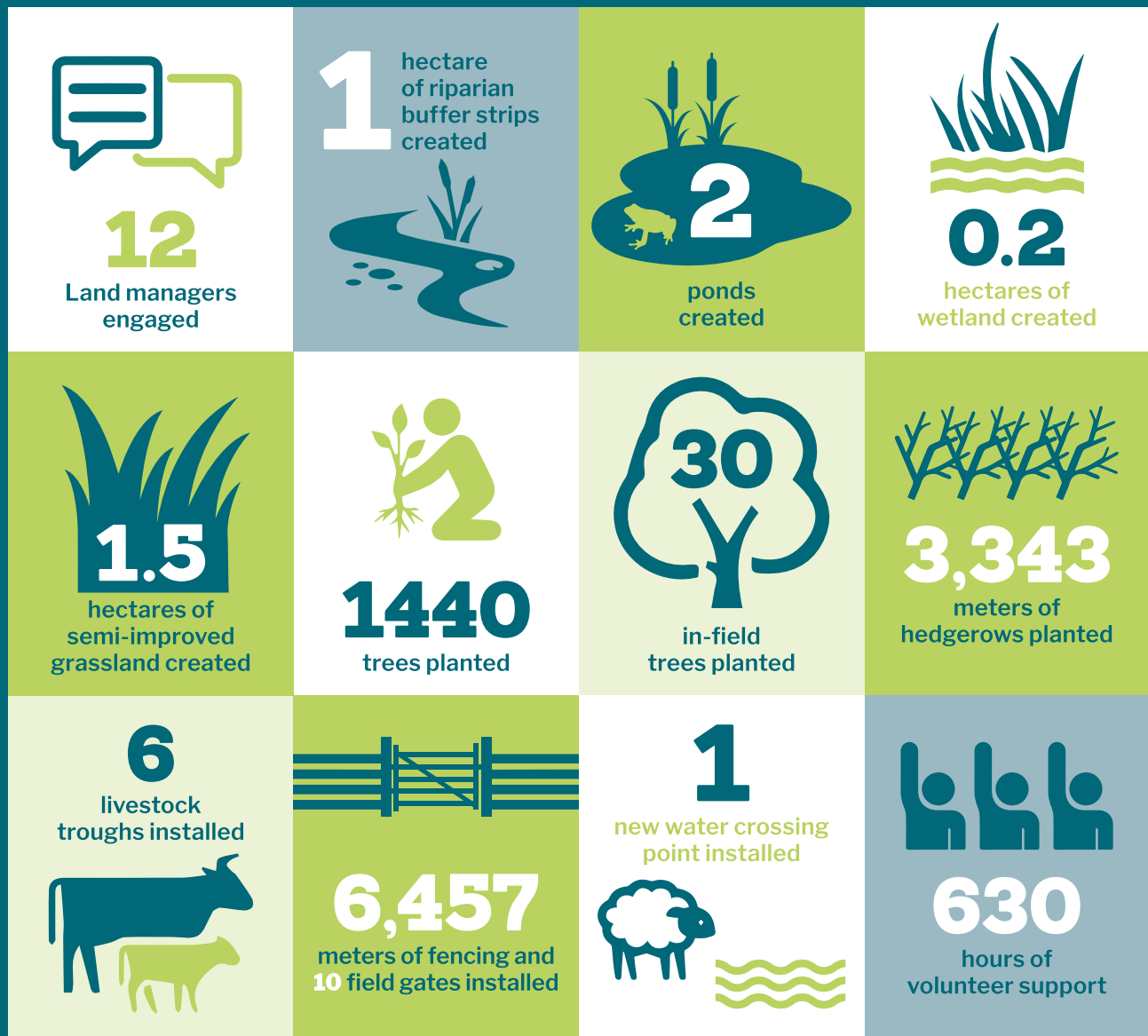


The BEACH Esk project is a FiPL project funded in partnership with the Environment Agency and delivered by the Yorkshire Wildlife Trust.

The BEACH Esk project is a catchment-scale restoration project on the Cock Mill / Rigg Mill Beck network near Whitby. It aims to improve the ecological and chemical status of the watercourses, reduce marine pollution in Whitby Harbour and reduce agricultural pollution in the upper catchment as well as creating new habitat and improving connectivity across the landscape. This is being achieved by working in partnership with landowners / managers to deliver a capital works programme across multiple holdings, from the upper limits of the catchment to the main River Esk at Ruswarp.



# FIPL funding has enabled the BEACH Esk project to deliver the following outcomes



**FARMING IN PROTECTED LANDSCAPES HAS ALLOWED ME TO COMPLETE WORKS I'VE WANTED TO DO FOR YEARS."**



**WE WANT TO SHARE OUR SKILLS, KNOWLEDGE AND EXPERIENCE IN REGENERATIVE NO-DIG AGRICULTURE TO PROMOTE THE FUTURE OF SUSTAINABLE FARMING AND SMALL-SCALE DIVERSE BUSINESSES WITHIN THE NORTH YORK MOORS NATIONAL PARK, WHILST BOOSTING BIODIVERSITY.”**

Ruby Tildsley

## Tree Top Press



FiPL funding has enabled this enterprising couple to further develop their business and deliver multiple outcomes at Tree Top Press.

FiPL funding was used to increase biodiversity and wildlife habitat by creating a series of ponds and scrapes. Funding has also provided a learning and education space in a newly constructed polytunnel and has improved a field track to enable disabled access to the polytunnel, on a regenerative no-dig market garden site.

A key aim of the project is to foster a love of nature and the environment in young children. Creating the ponds and scrapes is a simple and highly effective way to create rich habitat for freshwater wildlife. A local school will be involved in recording the colonisation of the site providing an exciting and unique opportunity to watch first-hand, the re-wetting of a site and witness the first years of naturalisation.





**TO SEE SUCH A TRANSFORMATION FROM A DERELICT PLOT TO A WELL ORGANISED MIX OF DIVERSE HABITATS AND FOOD GROWING PLOTS AND POLYTUNNELS, OCCUPYING THE WHOLE OF THE 2.5 ACRES, IN JUST 5 YEARS IS EVIDENCE OF RUBY AND ADAM'S DYNAMIC WORK ETHIC."**

Visitor feedback

Awarded  
**£17,824**





## Harriet Air Farm and Ristbrow Farm



Harriet Air and Ristbrow are farms run by a local farming family. FiPL funding enabled new stock fencing adjacent to the river Rye and the installation of a solar powered water pump and a water trough on hardstanding.

Excluding stock from the river will reduce bankside erosion allowing it to become a more diverse and habitat rich area and reduce sediment entering the river improving water quality.

FiPL funding also supported the planting and gapping up of 2.5km of hedges, with fencing. These hedges will provide habitat for small mammals and farmland birds and essential shelter for livestock.

Awarded  
**£38,422**





**I HAVE A REAL PRIDE NOW WHEN PEOPLE COME TO VISIT THE FARM, THE HEDGES HAVE REALLY ENHANCED THE AESTHETIC APPEAL OF THE FARM.”**

Andrew Boddy

Awarded  
**£30,198**

## Skelder Farm



Skelder Farm is an upland farm with suckler cows and sheep where the farmer explored how they could do more for nature on the farm and how they could move towards a lower carbon footprint.

FiPL funding enabled the farmer to create a new woodland wildlife corridor across the farm, planting 377 metres of new hedgerow, gapping up 403 metres of existing hedgerow and planting over 700 native trees. This has helped to create greater habitat connectivity across the farm, linking existing woodlands around the farm.

This project will help reduce the risk of flooding, improve water quality and aid in the prevention of soil erosion. Planting more trees will help to reduce the carbon footprint of the farm as the trees sequester carbon as they grow and create essential shelter belts for the livestock, thus improving animal welfare.





## White Lodge Farm



The aim at White Lodge Farm is to create wildlife rich habitats including woodland, rough grassland, traditional apple orchards and a pond. FiPL funding has helped build on work already undertaken, funding a further 242 apple trees and the purchase of a small cider/juice production unit.

The apple orchards will support the survival of traditional cider apple varieties. In addition to providing a home and food for invertebrates and birds, the trees will sequester carbon and their roots will slow the runoff of water into Black Beck which flows into the River Derwent. The cider/juice production unit is being used to produce cider which will be sold into the local market.





**WE HAVE SEEN AN INCREASE IN INSECTS AND BIRDS AND MORE FIELD VOLES FOR THE RESIDENT BARN OWLS, WHO HAVE MANAGED TO RAISE MORE OWLETS THIS YEAR. SCARBOROUGH FIELD NATURALIST GROUP WERE KEEN TO VISIT TO CARRY OUT A SURVEY, AMONGST THE MULTITUDE OF PLANTS AND BATS RECORDED, A GIANT ELEPHANT HAWK MOTH WAS SPOTTED.”**

Mark Hayes

Awarded  
**£8,917**





**North York Moors**  
National Park

