

# Recording Sheet for River Study

A bend in a river is called a **meander**. It is formed by the water in three ways.

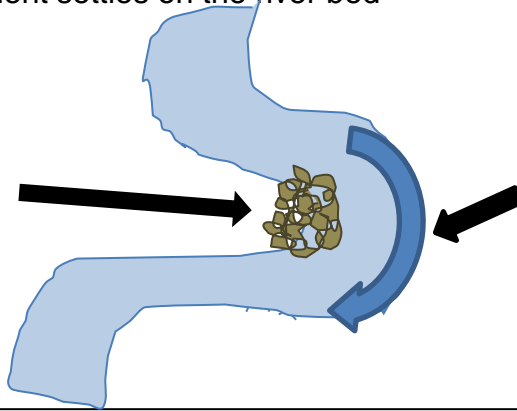
**Erosion** – when water washes away the river bank

**Transport** – when sediment (sand, gravel and pebbles) is carried along in the water

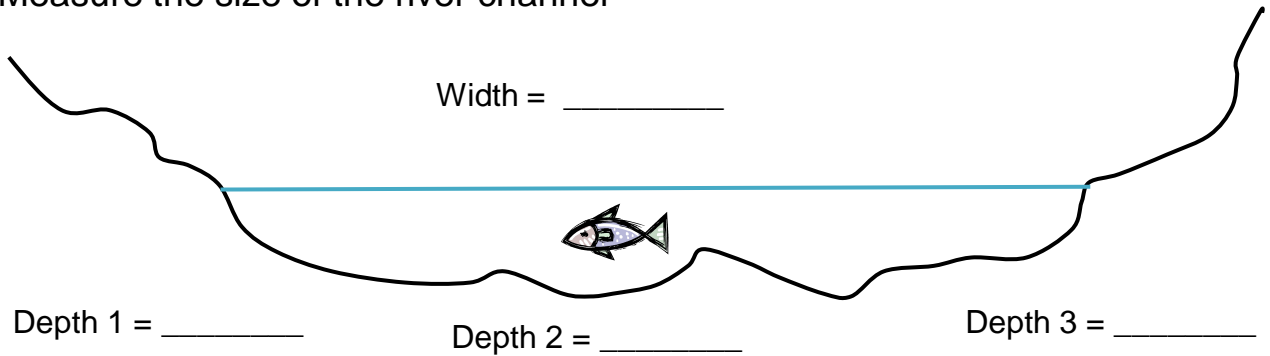
**Deposition** – when sediment settles on the river bed

Deposition occurs on the inside of the bend where the water flows more slowly. This pebbly beach is called a

Erosion wears away the river bank on the outside of the bend where the water flows fastest. This forms a



Measure the size of the river channel



Time how long it takes for an object to float 5 metres. Do the test 3 times.

**Test 1** \_\_\_\_\_ seconds

**Test 2** \_\_\_\_\_ seconds

Average time = \_\_\_\_\_ seconds

**Test 3** \_\_\_\_\_ seconds

Water velocity =  $\frac{\text{distance (m)}}{\text{average time (secs)}}$  =  $\frac{5}{\text{average time}}$  = \_\_\_\_\_ m / sec

What happens to pebbles as they are transported down the river? Do they become....

bigger or smaller in size?



smoother or more angular in shape?



# Recording Sheet for Freshwater Invertebrates



Invertebrate	Number found
Stonefly nymph	
Mayfly nymph	
Dragonfly nymph	
Caseless caddis larva	
Cased caddis larva	
Blackfly larva	
Water mite	
Midge larva	

# Key for identifying freshwater invertebrates



**START**

Has legs

No legs

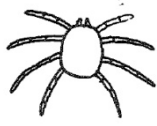
Living in a case of tiny twigs or stones  
**Cased caddis larva**



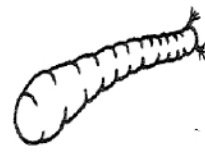
Not living in a case

3 pairs of legs

4 pairs of legs  
**Water mite**

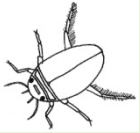


Moves as if it has a sucker on both ends. Often stands on one end.  
**Blackfly larva**



No suckers

Hard wing case on its back  
**Water beetle**



Or  
**Water boatman**

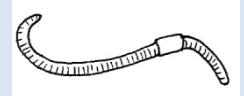


No hard wing case on its back

Less than 15 body segments, red or green, up to 3cm long. May wriggle in a figure of 8 movement.  
**Midge larva**



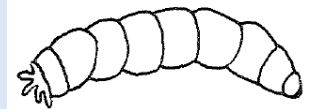
At least 15 body segments, long and thin, brown or red  
**Worm**



Short tails or hooks

Long tails (nearly as long as body)

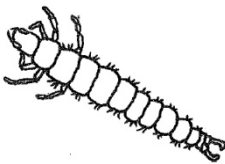
Longer than 2cm, fat like a maggot.  
**Cranefly larva (Daddy long legs)**



3 or 5 tails  
**Dragonfly or damselfly larva**



2 very short hooks  
**Caseless caddis larva**



2 tails  
**Stonefly nymph**



3 tails  
**Mayfly nymph**



