

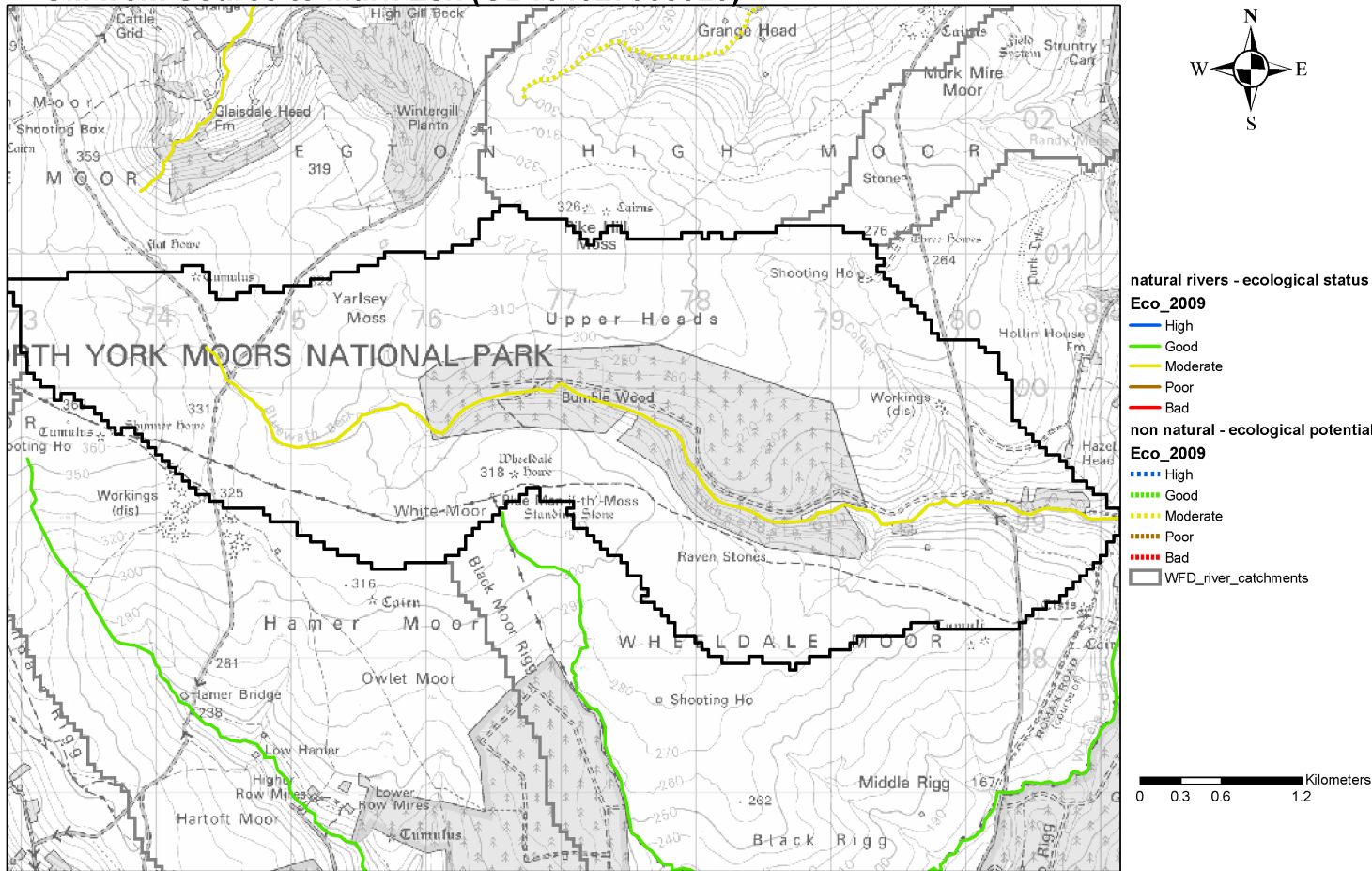
GB104027068020

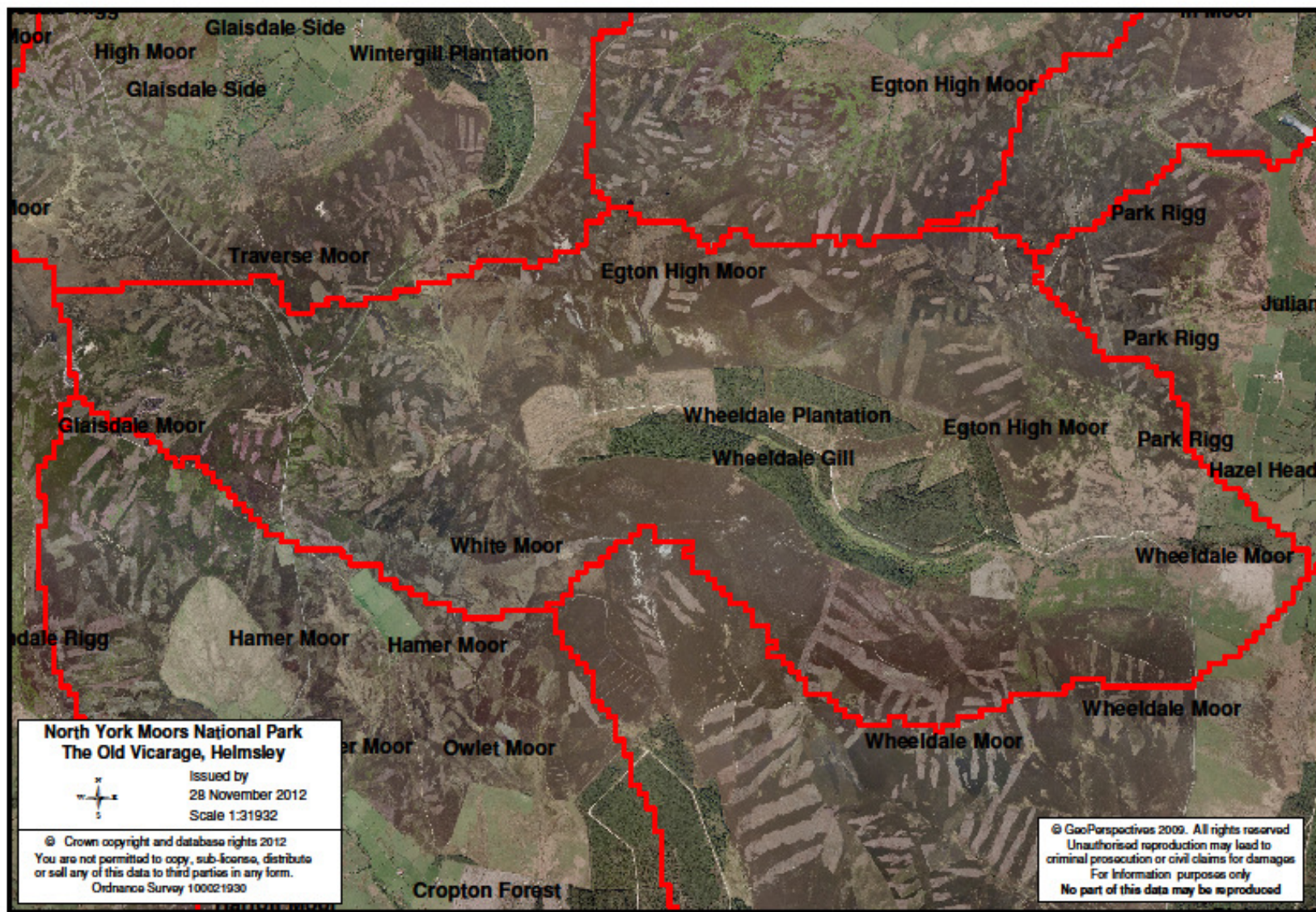
## Wheeldale Gill from Source to Murk Esk (Esk and Coast)

Ecological Status: Moderate

Failing Elements: pH

### Waterbody Ecological Status/Potential for Wheeldale Gill from Source to Murk Esk (GB104027068020)





**North York Moors National Park**  
**The Old Vicarage, Helmsley**

Issued by  
28 November 2012  
Scale 1:31932

© Crown copyright and database rights 2012  
You are not permitted to copy, sub-licence, distribute  
or sell any of this data to third parties in any form.  
Ordnance Survey 100021930

© GeoPerspectives 2009. All rights reserved  
Unauthorised reproduction may lead to  
criminal prosecution or civil claims for damages  
For information purposes only  
No part of this data may be reproduced

Issues identified	Solutions / work required	Responsibility/Lead	Costing's (High/Medium/Low)	Timings
<p><b>1) Peatland Restoration</b></p> <p><b>Egton High Moor</b> <b>Wheeldale Moor</b> <b>White Moor</b></p>	<ul style="list-style-type: none"> <li>Liaison with land owners and land managers</li> </ul>	Yorkshire Peat Partnership / Natural England / NYMNPA	Low	2013 - 2014
	<ul style="list-style-type: none"> <li>Walkover surveys to identify problem areas (grips, gullies, bare peat and problem tracks)</li> </ul>	Yorkshire Peat Partnership / Natural England / NYMNPA	Medium	2013 - 2021
	<ul style="list-style-type: none"> <li>Development of appropriate solution/s to problems (grip and gully blocking, peat stabilisation, re-profiling and re-vegetation) and delivery of improvement work.</li> </ul>	Yorkshire Peat Partnership / Natural England / NYMNPA	High	2014 - 2021
<p><b>2) Woodland Measures</b></p> <p><b>Large scale work already carried out on Wheeldale Plantation</b></p> <p><b>Potential for more removal of conifers (and new native woodland creation), fuzzy forestry and riparian buffer strips and control of conifer regeneration</b></p> <p><b>Potential for native woodland restoration at Hazel Heads</b></p>	<ul style="list-style-type: none"> <li>Liaison with land owners and land managers</li> </ul>	Forestry Commission / NYMNPA	Low	2013 – 2027
	<ul style="list-style-type: none"> <li>Identify suitable sites for native woodland creation</li> </ul>	Forestry Commission / NYMNPA	Low	2013 – 2027
	<ul style="list-style-type: none"> <li>Carryout woodland creation through the Forestry Commission (English Woodland Grant Scheme), Forestry Commission planned work or NYMNPA grant schemes.</li> </ul>	Forestry Commission / NYMNPA	Medium	2013 - 2027

<p><b>3) Water quality monitoring</b></p> <p><b>Chemical and Biological Monitoring of River Esk and its tributaries</b></p>	<ul style="list-style-type: none"> <li>Expand current network of chemical and biological monitoring sites to include all main tributaries of the Esk</li> </ul>	<p>Environment Agency (Lead)</p>	<p>Medium</p>	<p>2013 – onwards</p>
<p><b>4) Pollution monitoring</b></p>	<ul style="list-style-type: none"> <li>Angling Clubs to continue to monitor the river for sources of pollution and report any pollution problems to the Environment Agency via incident hotline</li> <li>CSF officer, Natural England staff, NYMNP staff to report any pollution problems to the Environment Agency via incident hotline</li> </ul>	<p>Goathland Angling Club, Other Angling Clubs, Natural England, NYMNP, Yorkshire Esk Trust</p>	<p>Low</p>	<p>2013 - onwards</p>

DRAFT