

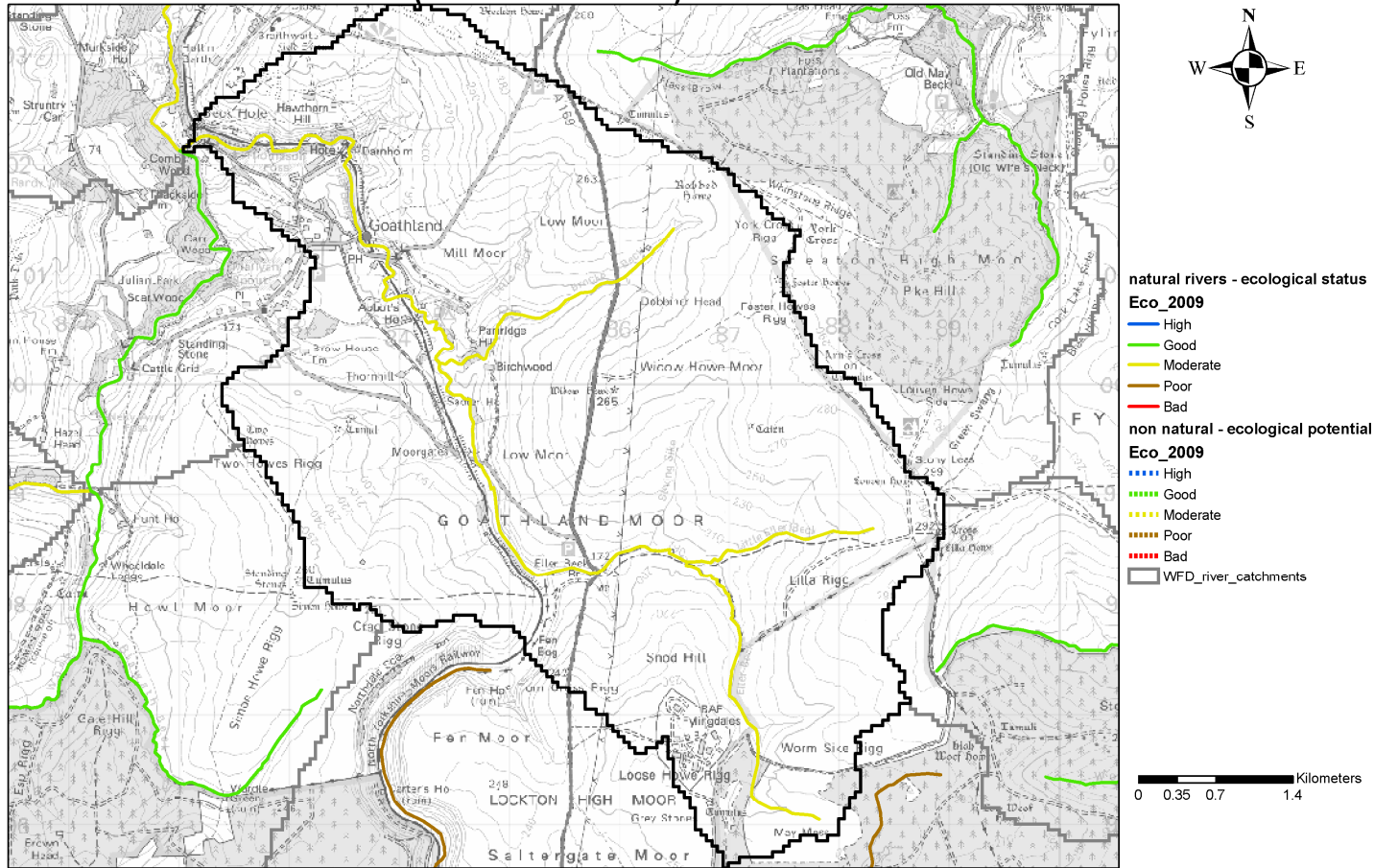
GB104027068050

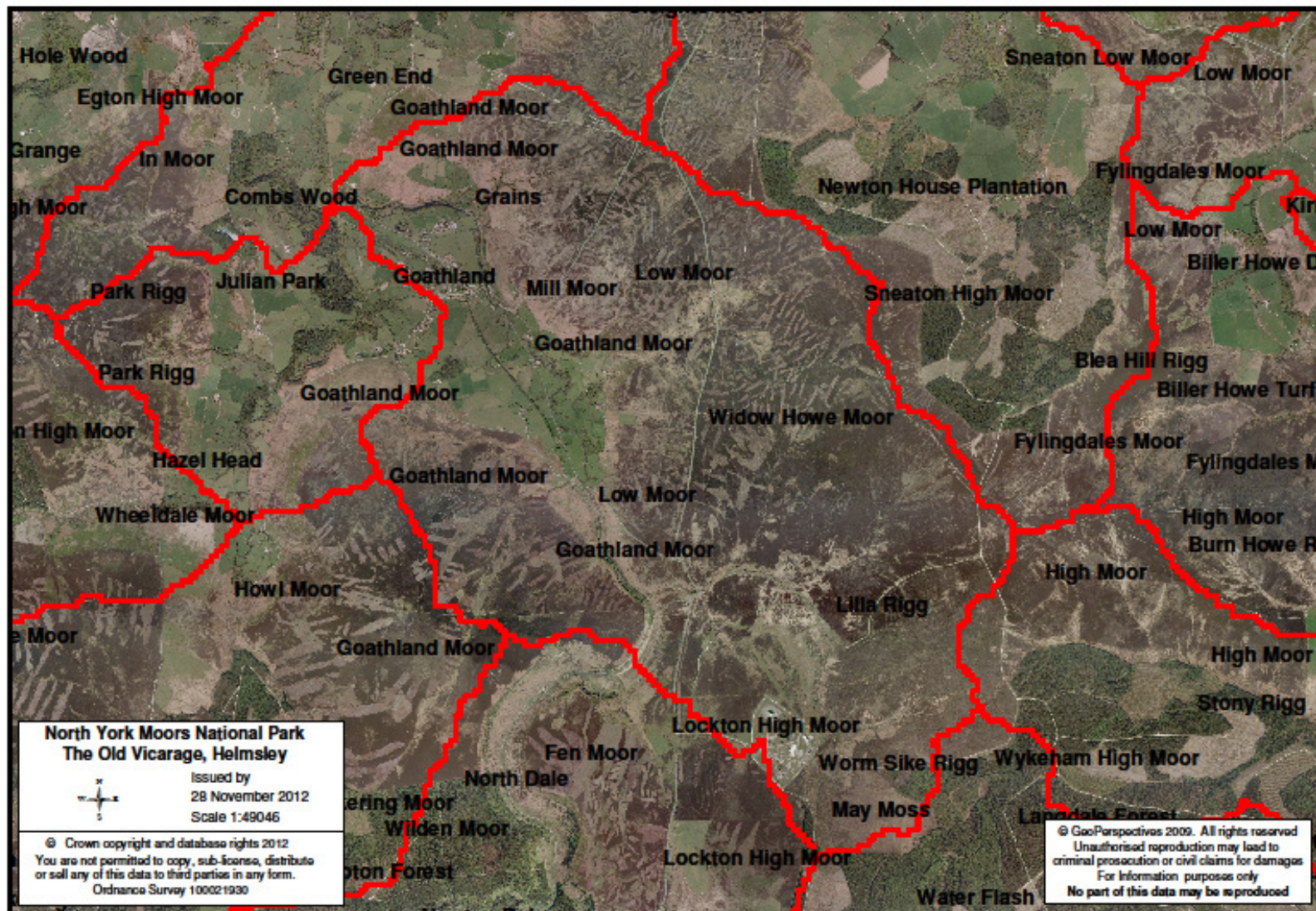
Eller beck from Source to Murk Esk (Esk and Coast)

Ecological Status: Moderate

Failing Elements: Fish

Waterbody Ecological Status/Potential for Eller beck from Source to Murk Esk (GB104027068050)





North York Moors National Park
The Old Vicarage, Helmsley

Issued by
 28 November 2012
 Scale 1:49046

© Crown copyright and database rights 2012
 You are not permitted to copy, sub-license, distribute
 or sell any of this data to third parties in any form.
 Ordnance Survey 100021930

© GeoPerspectives 2009. All rights reserved
 Unauthorised reproduction may lead to
 criminal prosecution or civil claims for damages
 For information purposes only
 No part of this data may be reproduced

Issues identified	Solutions / work required	Responsibility/Lead	Costing's (High/Medium/Low)	Timings
<p>1) Barriers to fish migration</p> <p>Number of natural barriers on Eller Beck</p>	<ul style="list-style-type: none"> Walkover surveys to identify problem structures 	<p>NYMNPA / Yorkshire Esk Trust</p>	<p>Low</p>	<p>2013</p>
<p>Walk Mill Foss (Waterfall) NZ83210 02227</p> <p>Water Ark Foss (Waterfall) NZ82736 02208</p> <p>Thomason Foss (Waterfall) NZ82659 02164</p> <p>Natural barrier on Brocka Beck</p> <p>Birch Fall (Waterfall) NZ84596 00246</p> <p>Man-made structures (upstream of natural barriers)</p> <p>D/S Weir at Goathland Railway Station (NZ83669 01391)</p> <p>U/S Weir at Goathland Railway Station (NZ83678 01304)</p>	<ul style="list-style-type: none"> All barriers mapped on GIS 	<p>NYMNPA / Yorkshire Esk Trust</p>	<p>Low</p>	<p>2013</p>

<p>2) Water quality – Fine Sediment + Nutrients</p> <p>Agriculture</p> <p>Whole Farm Appraisals ~ 9 farm holdings</p>	<ul style="list-style-type: none"> One to one visits with farmers in catchment. “Whole farm appraisals” through Catchment Sensitive Farming Scheme. Identification of any issues. <p>Walkover surveys of farm holdings</p>	Catchment Sensitive Farming Officer (Lead) / NYMNPA	Medium	2013 - 2021
	<ul style="list-style-type: none"> Development of appropriate solution/s to problems (follow up advice and grants) and delivery of improvement work (if required) Group events (advice and training for farmers) Environment Agency Catchment Restoration Fund, other external funding source, NYMNPA grant schemes and/or CSF grant. 	Catchment Sensitive Farming Officer / NYMNPA	High	2013 - 2021
	<ul style="list-style-type: none"> Sediment and Nutrient Monitoring Work. Identify hotspots of sediment and nutrient supply. 	Environment Agency monitoring network	Low	2013 - 2021
<p>3) Water quality – Nutrients</p> <p>Septic tanks</p>	<ul style="list-style-type: none"> Registration of all septic tanks in catchment 	Environment Agency (Lead)	Low	2013
	<ul style="list-style-type: none"> EA to raise awareness of issues and offer best practice guidance 	Environment Agency (Lead)	Low	2013 - onwards
	<ul style="list-style-type: none"> Records of maintenance 	Environment Agency (Lead)	Low	2013 – onwards
	<ul style="list-style-type: none"> Monitoring of maintenance and quality of discharges 	Environment Agency (Lead)	Medium	2013 – onwards

4) Water quality – Nutrients Yorkshire Water Infrastructure Goathland Sewage Works (NZ82830 01690) + Pumping stations	<ul style="list-style-type: none"> Liaison with Yorkshire Water 	Environment Agency (Lead) / NYMNPA	Low	2013
	<ul style="list-style-type: none"> Development of appropriate solution/s to problem (separate sewer systems, tertiary treatment, storage systems) 	Yorkshire Water/ Environment Agency / NYMNPA	Medium	2014 - 2027
	<ul style="list-style-type: none"> Improvement work 	Yorkshire Water	High	2015 - 2027
5) Water quality – Fine Sediment and other pollutants from roads Highways	<ul style="list-style-type: none"> Liaison with NYCC highways department Contact with NYCC – possibility to install silt traps and other pollution control measures (i.e. increased use of salt bins). 	Environment Agency (Lead) / NYMNPA	Low	2013
	<ul style="list-style-type: none"> Development of appropriate solution/s to problem (silt traps, ponds, swales) 	NYCC / Environment Agency / NYMNPA	Medium	2013 - 2027
	<ul style="list-style-type: none"> Improvement work 	NYCC	High	2013 - 2027
6) Peatland Restoration Goathland Moor Low Moor Mill Moor Widow Howe Moor Lilla Rigg Lockton High Moor Worm Sike Rigg	<ul style="list-style-type: none"> Liaison with land owners and land managers 	Yorkshire Peat Partnership / Natural England / NYMNPA	Low	2013 - 2014
	<ul style="list-style-type: none"> Walkover surveys to identify problem areas (grips, gullies, bare peat and problem tracks) 	Yorkshire Peat Partnership / Natural England / NYMNPA	Medium	2013 - 2021
	<ul style="list-style-type: none"> Development of appropriate solution/s to problems (grip and gully blocking, peat stabilisation, re-profiling and re-vegetation) and delivery of improvement work. 	Yorkshire Peat Partnership / Natural England / NYMNPA	High	2014 - 2021

7) Woodland Measures Potential for riparian woodland planting	<ul style="list-style-type: none"> Liaison with land owners and land managers 	Forestry Commission / NYMNPA	Low	2013 – 2027
	<ul style="list-style-type: none"> Identify suitable sites for native woodland creation 	Forestry Commission / NYMNPA	Low	2013 – 2027
	<ul style="list-style-type: none"> Carryout woodland creation through the Forestry Commission (English Woodland Grant Scheme) or NYMNPA grant schemes. 	Forestry Commission / NYMNPA	Medium	2013 – 2027
8) Non-native invasive plant species Japanese knotweed (<i>Fallopia japonica</i>)	<ul style="list-style-type: none"> Walkover surveys to identify distribution of invasive plants and severity of problem 	NYMNPA (Lead)	Low	2013 - onwards
	<ul style="list-style-type: none"> Liaison with land owners and land managers 	NYMNPA (Lead)	Low	2013 - onwards
	<ul style="list-style-type: none"> Control/eradication of non-native invasive plants 	NYMNPA (Lead)	Medium	2013 - 2021
9) Land Management Agri-environment schemes through Natural England Entry Level Stewardship Upland Entry Level Stewardship Higher Level Stewardship	<ul style="list-style-type: none"> Liaison with Natural England staff Promotion of resource protection measures in expiring Entry Level Stewardship agreements and new Upland Entry Level Stewardship agreements. Promotion of farms in the Esk valley for the Higher Level Stewardship scheme. 	NYMNPA (Lead)	Low	2013 - 2021

	<ul style="list-style-type: none"> Incorporation of resource protection measures in expiring Entry Level Stewardship agreements and new Upland Entry Level Stewardship agreements. New HLS agreements signed in the Esk valley (incorporating resource protection measures) 	Natural England (Lead) / NYMNPA	Medium	2013 - 2021
10) Invertebrate monitoring Long term data set and regular (monthly) monitoring of invertebrate populations	<ul style="list-style-type: none"> Network of invertebrate sampling points on the Esk which are monitored by volunteers. Co-ordinated by NYMNPA 	Esk Riverfly Partnership / NYMNPA	Low	2013 - onwards
11) Water quality monitoring Chemical and Biological Monitoring of River Esk and its tributaries	<ul style="list-style-type: none"> Expand current network of chemical and biological monitoring sites to include all main tributaries of the Esk 	Environment Agency (Lead)	Medium	2013 – onwards
12) Pollution monitoring	<ul style="list-style-type: none"> Angling Clubs to continue to monitor the river for sources of pollution and report any pollution problems to the Environment Agency via incident hotline CSF officer, Natural England staff, NYMNPA staff to report any pollution problems to the Environment Agency via incident hotline 	Goathland Angling Club, Other Angling Clubs, Natural England, NYMNPA, Yorkshire Esk Trust	Low	2013 - onwards
13) Declining water vole population	<ul style="list-style-type: none"> Carry out habitat improvement work to restore sections of the Esk. 	NYMNPA	Medium	2013 – onward
	<ul style="list-style-type: none"> Monitor mink rafts and trap mink where necessary. 	Volunteers / NYMNPA	Low	2013 – onwards

	<ul style="list-style-type: none"> • Potential re-introduction of water vole in areas with suitable habitat. 	Volunteers / NYMNP	Low	2013 – onwards
<p>14) Spawning habitat improvements</p> <p>Lack of suitable spawning habitat and poor quality spawning habitat (siltation)</p>	<ul style="list-style-type: none"> • Address siltation problems (priority) • Walkover surveys to identify potential improvements to spawning habitat in the upper catchment. • Investigate potential improvements to spawning substrate i.e. cleaning gravels. • Investigate addition of spawning substrate i.e. gravels/cobbles. • Investigate tributaries to make sure that spawning areas are accessible to migratory fish i.e. sensitive beck debris clearance. 	Yorkshire Esk Trust / Environment Agency / NYMNP	Medium	2013 - onwards