

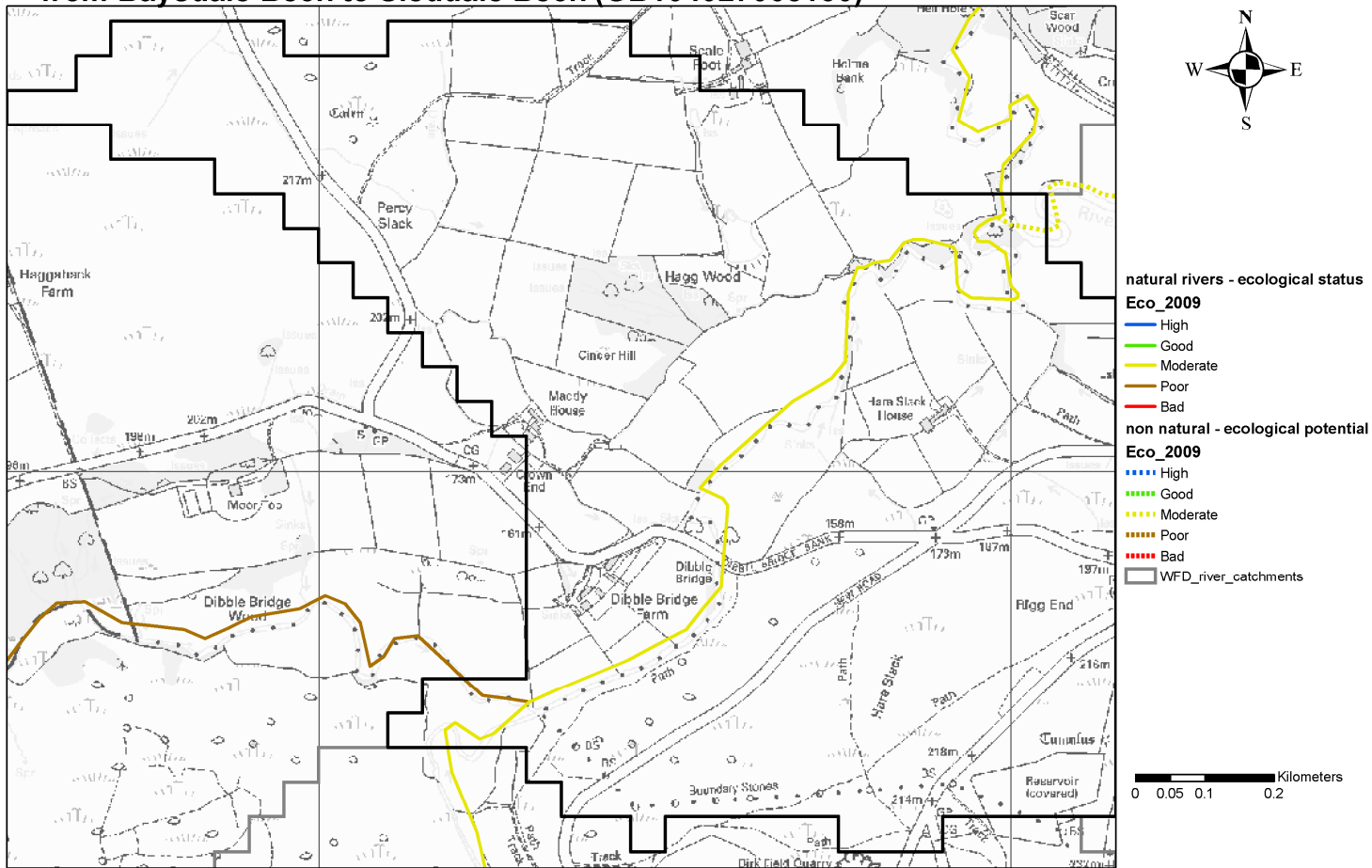
GB104027068130

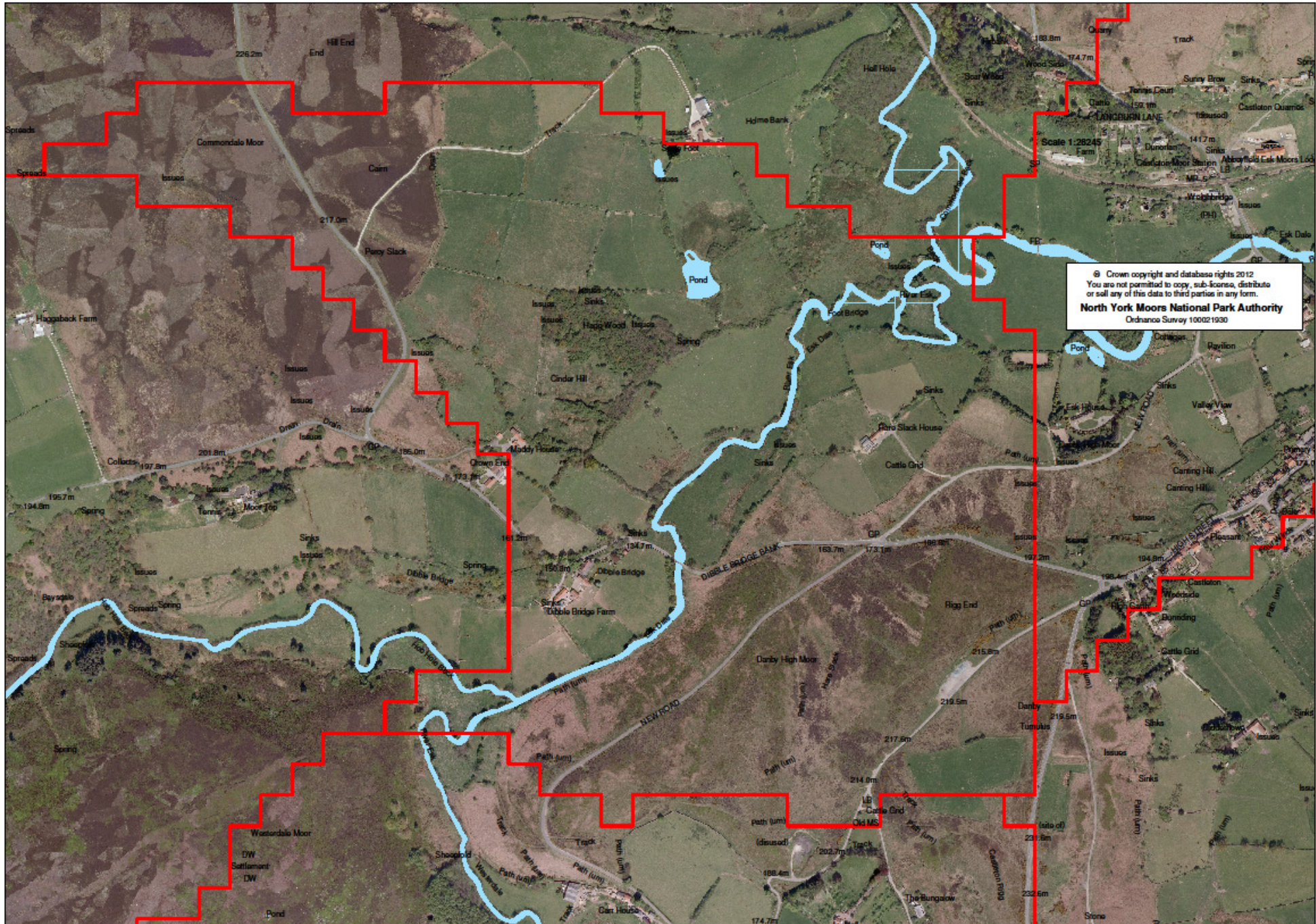
# River Esk from Baysdale Beck to Sleddale Beck (Esk and Coast)

Ecological Status: Moderate

Failing Elements: Fish, pH

## Waterbody Ecological Status/Potential for River Esk from Baysdale Beck to Sleddale Beck (GB104027068130)





Issues identified	Solutions / work required	Responsibility/Lead	Costing's (High/Medium/Low)	Timings
<p><b>1) Water quality – Fine Sediment + Nutrients</b></p> <p><b>Agriculture</b></p> <p>Whole Farm Appraisals 2 farm holdings</p>	<ul style="list-style-type: none"> <li>One to one visits with farmers in catchment. "Whole farm appraisals" through Catchment Sensitive Farming Scheme.</li> </ul> <p>Identification of any issues.</p> <p>Walkover surveys of farm holdings</p>	Catchment Sensitive Farming Officer (Lead) / NYMNPA	Medium	2013 - 2021
	<ul style="list-style-type: none"> <li>Development of appropriate solution/s to problems (follow up advice and grants) and delivery of improvement work (if required).</li> <li>Group events (advice and training for farmers)</li> <li>Environment Agency Catchment Restoration Fund, other external funding source, NYMNPA grant schemes and/or CSF grant.</li> </ul>	Catchment Sensitive Farming Officer / NYMNPA	High	2013 - 2021
	<ul style="list-style-type: none"> <li>Sediment and Nutrient Monitoring Work.</li> </ul> <p>Identify hotspots of sediment and nutrient supply.</p>	University of Durham and Environment Agency monitoring network	Low	2013 - 2021
<p><b>2) Water quality – Nutrients</b></p> <p><b>Septic tanks</b></p>	<ul style="list-style-type: none"> <li>Registration of all septic tanks in catchment</li> </ul>	Environment Agency (Lead)	Low	2013
	<ul style="list-style-type: none"> <li>EA to raise awareness of issues and offer best practice guidance</li> </ul>	Environment Agency (Lead)	Low	2013 - onwards
	<ul style="list-style-type: none"> <li>Records of maintenance</li> </ul>	Environment Agency (Lead)	Low	2013 – onwards
	<ul style="list-style-type: none"> <li>Monitoring of maintenance and quality of discharges</li> </ul>	Environment Agency (Lead)	Medium	2013 – onwards

<b>3) Land Management</b>  <b>Agri-environment schemes through Natural England</b>  <b>Entry Level Stewardship</b> <b>Upland Entry Level Stewardship</b> <b>Higher Level Stewardship</b>	<ul style="list-style-type: none"> <li>Liaison with Natural England staff</li> <li>Promotion of resource protection measures in expiring Entry Level Stewardship agreements and new Upland Entry Level Stewardship agreements.</li> <li>Promotion of farms in the Esk valley for the Higher Level Stewardship scheme.</li> </ul>	NYMNPAs (Lead)	Low	2013 - 2021
	<ul style="list-style-type: none"> <li>Incorporation of resource protection measures in expiring Entry Level Stewardship agreements and new Upland Entry Level Stewardship agreements.</li> <li>New HLS agreements signed in the Esk valley (incorporating resource protection measures).</li> </ul>	Natural England (Lead) / NYMNPAs	Medium	2013 - 2021
<b>4) Water quality monitoring</b>  <b>Chemical and Biological Monitoring of River Esk and its tributaries</b>	<ul style="list-style-type: none"> <li>Expand current network of chemical and biological monitoring sites to include all main tributaries of the Esk</li> </ul>	Environment Agency (Lead)	Medium	2013 – onwards
<b>5) Pollution monitoring</b>	<ul style="list-style-type: none"> <li>Angling Clubs to continue to monitor the river for sources of pollution and report any pollution problems to the Environment Agency via incident hotline</li> <li>CSF officer, Natural England staff, NYMNPAs staff to report any pollution problems to the Environment Agency via incident hotline</li> </ul>	Angling Clubs, Natural England, NYMNPAs, Yorkshire Esk Trust	Low	2013 - onwards

<p>6) <b>Declining freshwater pearl mussel population</b></p>	<ul style="list-style-type: none"> <li>• Continue to carry out habitat restoration work to restore the Esk.</li> <li>• Monitor freshwater pearl mussel population.</li> <li>• Monitor re-introduction sites.</li> </ul>	<p>NYMNPA (Lead) / Environment Agency</p>	<p>Medium</p>	<p>2013 - onwards</p>
	<ul style="list-style-type: none"> <li>• High Status (Water Framework Directive) - <b>High status target required for the survival of the Freshwater Pearl Mussel population in the Esk.</b></li> <li>• EA to review all waterbodies upstream of the FWPM population. Consider revising the target for these waterbodies to "<b>High Status</b>".</li> </ul>	<p>Environment Agency (Lead)</p>	<p>Medium</p>	<p>2013 – onwards</p>
	<ul style="list-style-type: none"> <li>• Continue to work with Freshwater Biological Association Ark project.</li> <li>• Captive breeding of Esk freshwater pearl mussels.</li> <li>• Re-introduction of freshwater pearl mussels to Esk.</li> </ul>	<p>Freshwater Biological Association / NYMNPA</p>	<p>Low</p>	<p>2013 - onwards</p>
<p>7) <b>Spawning habitat improvements</b></p> <p><b>Lack of suitable spawning habitat and poor quality spawning habitat (siltation)</b></p>	<ul style="list-style-type: none"> <li>• <b>Address siltation problems (priority)</b></li> <li>• Walkover surveys to identify potential improvements to spawning habitat in the upper catchment</li> <li>• Investigate potential improvements to spawning substrate i.e. cleaning gravels.</li> </ul>	<p>Yorkshire Esk Trust / Environment Agency / NYMNPA</p>	<p>Medium</p>	<p>2013 - onwards</p>

	<ul style="list-style-type: none"><li>• Investigate addition of spawning substrate i.e. gravels/cobbles.</li><li>• Investigate tributaries to make sure that spawning areas are accessible to migratory fish i.e. sensitive beck debris clearance.</li></ul>			
--	--	--	--	--

DRAFT