





Bransdale Estate Moorland
Access for horses

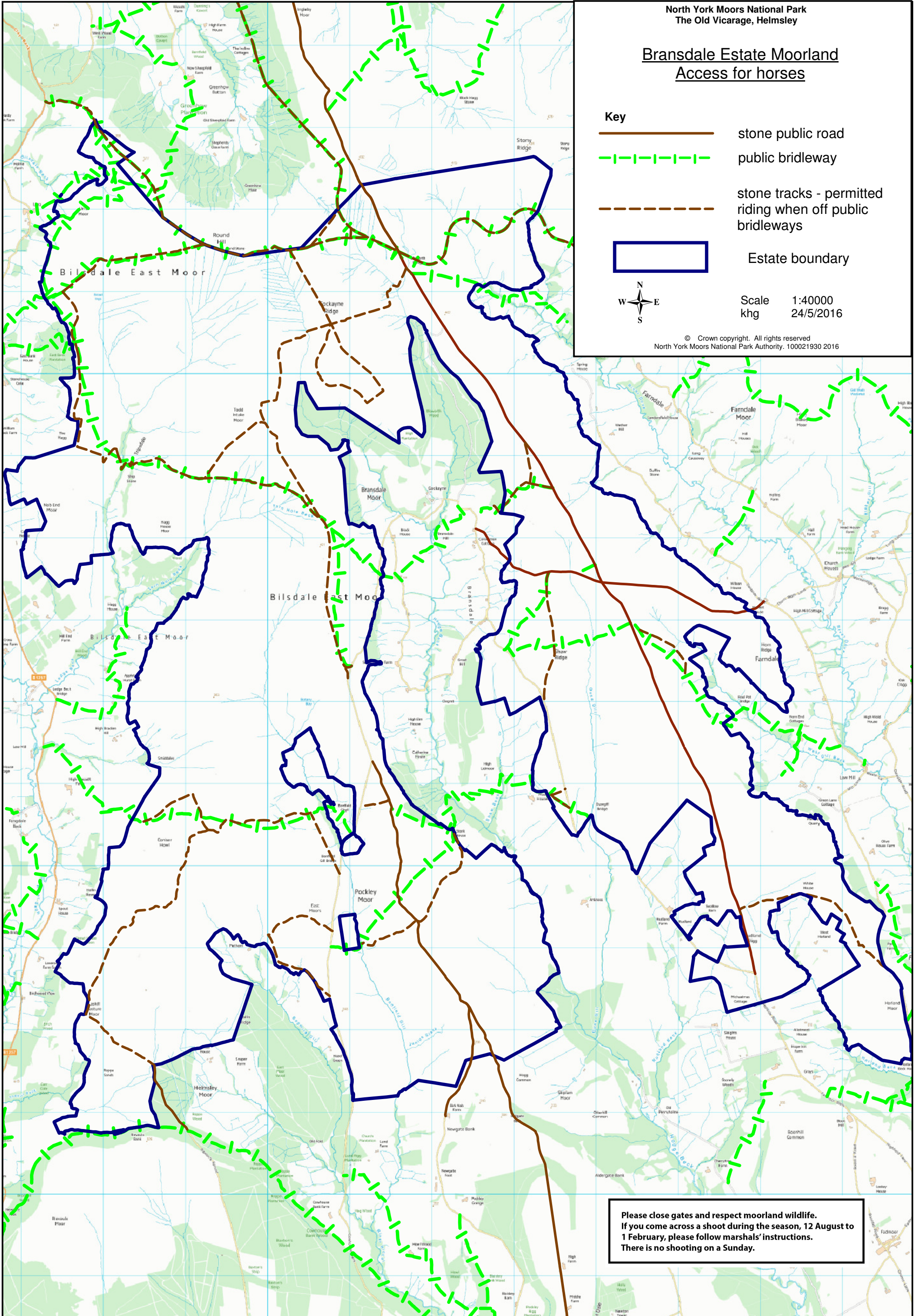
Key

-  stone public road
-  public bridleway
-  stone tracks - permitted riding when off public bridleways
-  Estate boundary



Scale 1:40000
khg 24/5/2016

© Crown copyright. All rights reserved
North York Moors National Park Authority. 100021930 2016



Please close gates and respect moorland wildlife.
If you come across a shoot during the season, 12 August to 1 February, please follow marshals' instructions.
There is no shooting on a Sunday.